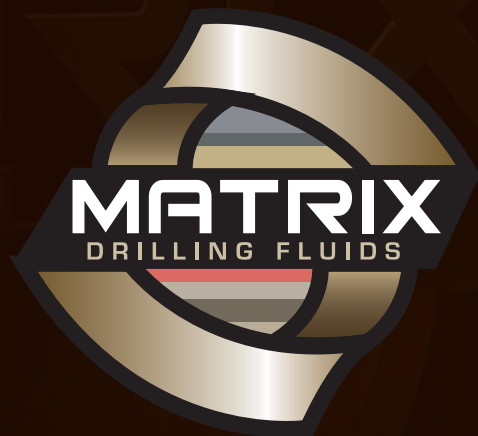


MATRIX SHIELD™ MUD SYSTEM

This inhibitive water-based polymer mud system uses three different mechanisms to provide well-bore stability. Unlike other inhibitive water-based mud systems, Matrix Shield™ is environmentally acceptable and can be land spread.



Bus: 403 802 3629
Fax: 403 802 3630

WWW.MATRIXDRILLINGFLUIDS.COM

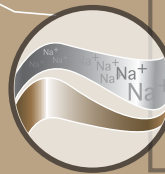
Suite 1240, 540 - 5th Ave SW Calgary, AB T2P 0M2

INCLUDES

3 STABILITY MECHANISMS

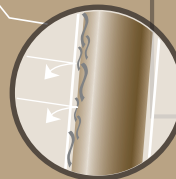
CATION EXCHANGE

Na⁺



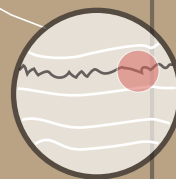
This exchange mechanism between an inhibitive cation and the sodium ion on reactive clay minerals prevents swelling and subsequent shale sloughing.

SHALE ENCAPSULATION



Reactive clays and shales are coated with polymers to prevent hydration/dispersion.

PHYSICAL PLUGGING



This specially formulated blend mixes easily into the mud system. Unlike similar products, it has a large range of particle sizes that physically plug micro-fractures and porous zones.

The Matrix Shield™ inhibitive water-based mud system is cost-effective. For more information, contact us today.